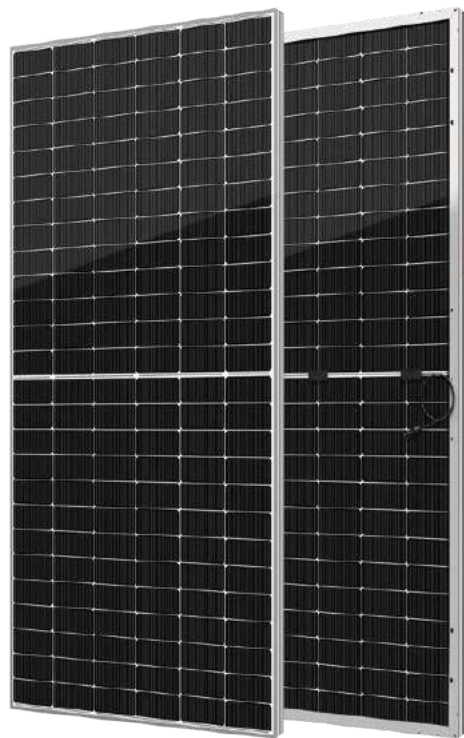




YUKON Series

Half-Cell Bifacial Module

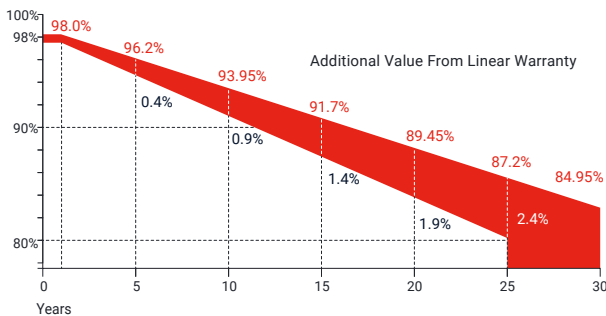
595-610Wp | **21.82%**
Module Power Output | Max Efficiency



Key Features

- High module conversion efficiency
- Better temperature coefficient
- Super multi busbar technology
- Low attenuation long warranty
- Superior load capacity
- Higher bifacially
- USA based liability insurance
- Houston, Texas based company

Warranty



15 Years Guarantee on product material and workmanship

30 Years Linear power output warranty

Product Certification

IEC61215:2016; IEC 61730:2016; UL61215; UL61730	
IEC62804	PID
IEC61701	Salt Mist
IEC62716	Ammonia Resistance
IEC60068	Dust and Sand
IEC61215	Hailstone
Fire Type (UL61730): Type 29	
ISO14001:2015; ISO9001:2015; ISO45001:2018	

About SEG Solar

Founded in 2016, SEG is a leading vertically integrated PV manufacturer headquartered in Houston, Texas, U.S., and is dedicated to delivering reliable and cost-effective solar modules to the utility, commercial and residential markets. By the end of 2023, SEG has shipped over 5 GW of solar modules worldwide. The company is expected to exceed a production capacity of 5.5 GW by the end of 2024.



Download Datasheet

Electrical Characteristics

Module Type	SEG-595-BMZ-BG			SEG-600-BMZ-BG			SEG-605-BMZ-BG			SEG-610-BMZ-BG		
	Front STC	Front NOCT	Back STC	Front STC	Front NOCT	Back STC	Front STC	Front NOCT	Back STC	Front STC	Front NOCT	Back STC
Maximum Power -Pmp(Wp)*	595	450	417	600	454	420	605	458	424	610	462	427
Open Circuit Voltage -Voc(V)	53.40	50.86	53.38	53.50	51.01	53.48	53.61	51.19	53.59	53.70	51.36	53.68
Short Circuit Current -Isc(A)	13.98	11.19	9.79	14.03	11.25	9.82	14.08	11.31	9.89	14.13	11.37	9.95
Maximum Power Voltage -Vmp(V)	45.05	42.94	45.03	45.30	43.07	45.28	45.53	43.21	45.51	45.76	43.34	45.74
Maximum Power Current -Imp(A)	13.21	10.48	9.26	13.25	10.54	9.28	13.29	10.60	9.32	13.33	10.66	9.34
Module Efficiency(%)	21.29			21.46			21.64			21.82		
Power Tolerance(W)							(0, +4.99)					
Maximum System Voltage							1500V DC					
Maximum Series Fuse Rating							30 A					
Bifaciality							70±10%					

STC: Irradiance 1000 W/m² module temperature 25°C AM=1.5

NOCT: Irradiance 800W/m² ambient temperature 20°C module temperature 45°C wind speed: 1m/s

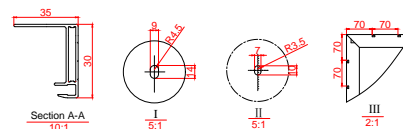
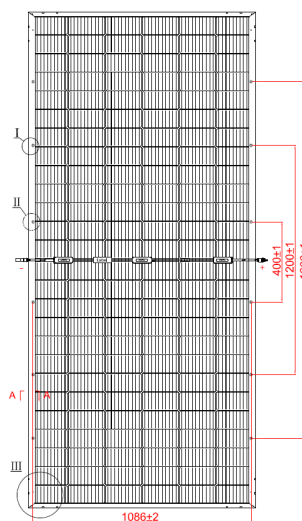
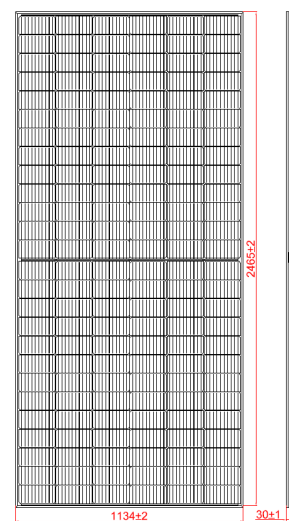
*Measuring tolerance: ±3%

Mechanical Specifications

External Dimension	2465 x 1134 x 30 mm
Weight	34.0 kg
Solar Cells	PERC Mono 182 x 91 mm(156 pcs)
Front Glass	2.0 mm AR coating semi-tempered glass
Back Glass	2.0 mm Semi-tempered glass
Frame	Anodized aluminium alloy
Junction Box	IP68 / 3 diodes
Connector Type	PV-CO02-xy / MC4
Cable Type	12 AWG PV Wire(UL)
Cable Length	Portrait: 400 mm(+)/ 200 mm(-) Landscape: 1200 mm(+)/ 1200 mm(-) or customized length
Mechanical Load(Front)	5400 Pa / 113 psf*
Mechanical Load(Rear)	2400 Pa / 50 psf*

*Refer to SEG installation manual for details

Technical Drawing



*Refer to SEG installation manual for details

Temperature Characteristics

Pmax Temperature Coefficient	-0.35 %/°C
Voc Temperature Coefficient	-0.27 %/°C
Isc Temperature Coefficient	+0.05 %/°C
Operating Temperature	-40~+85 °C
Nominal Operating Cell Temperature (NOCT)	45±2 °C

Packing Configuration

Container	20'GP	40'HQ
Pieces per Pallet	36	36
Pallets per Container	4	16
Pieces per Container	144	576

I-V Curve

