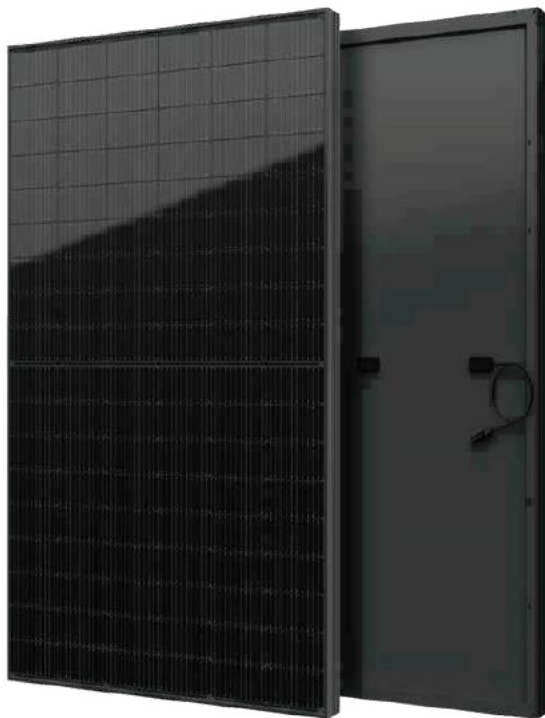




YUKON Series

Half-Cell Monofacial Module

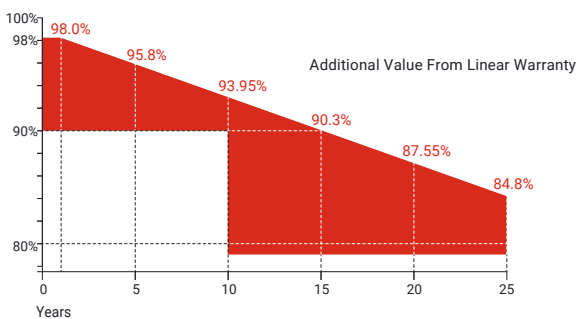
400-415Wp | **21.25%**
Module Power Output | Max Efficiency



Key Features

-  High module conversion efficiency
-  Better temperature coefficient
-  Super multi busbar technology
-  Low attenuation long warranty
-  Superior load capacity
-  Aesthetic appearance
-  USA based liability insurance
-  Houston, Texas based company

Warranty



25 Years Guarantee on product material and workmanship

25 Years Linear power output warranty

Product Certification

IEC61215:2016; IEC 61730:2016; UL61730	
IEC62804	PID
IEC61701	Salt Mist
IEC62716	Ammonia Resistance
IEC60068	Dust and Sand
IEC61215	Hailstone
Fire Type (UL61730): Type 1	
ISO14001:2015; ISO9001:2015; ISO45001:2018	



About SEG Solar

Founded in 2016, SEG is a leading vertically integrated PV manufacturer headquartered in Houston, Texas, U.S., and is dedicated to delivering reliable and cost-effective solar modules to the utility, commercial and residential markets. By the end of 2023, SEG has shipped over 5 GW of solar modules worldwide. The company is expected to exceed a production capacity of 5.5 GW by the end of 2024.



Download Datasheet

Electrical Characteristics

Module Type	SEG-400-BMD-HV		SEG-405-BMD-HV		SEG-410-BMD-HV		SEG-415-BMD-HV	
	Front STC	Front NOCT	Front STC	Front NOCT	Front STC	Front NOCT	Front STC	Front NOCT
Maximum Power -Pmp(Wp)*	400	301	405	304	410	308	415	311
Open Circuit Voltage -Voc(V)	37.12	36.64	37.22	34.73	37.32	34.81	37.42	34.90
Short Circuit Current -Isc(A)	13.60	10.99	13.70	11.07	13.80	11.15	13.90	11.23
Maximum Power Voltage -Vmp(V)	30.81	28.82	30.93	28.91	31.05	29.05	31.17	29.19
Maximum Power Current -Imp(A)	12.99	10.44	13.10	10.51	13.21	10.59	13.32	10.66
Module Efficiency(%)	20.48		20.74		21.00		21.25	
Power Tolerance(W)					(0, +4.99)			
Maximum System Voltage					1500V DC			
Maximum Series Fuse Rating					25 A			

STC: Irradiance 1000 W/m² module temperature 25°C AM=1.5

NOCT: Irradiance 800W/m² ambient temperature 20°C module temperature 45°C wind speed: 1m/s

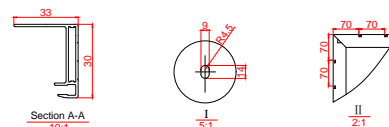
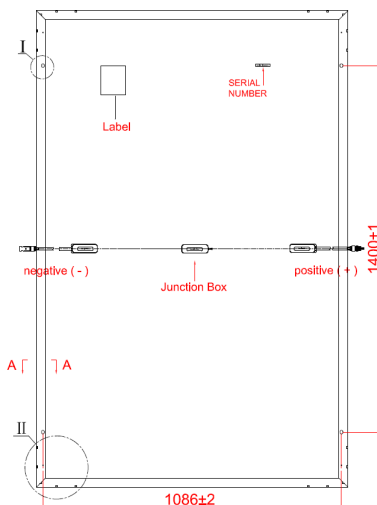
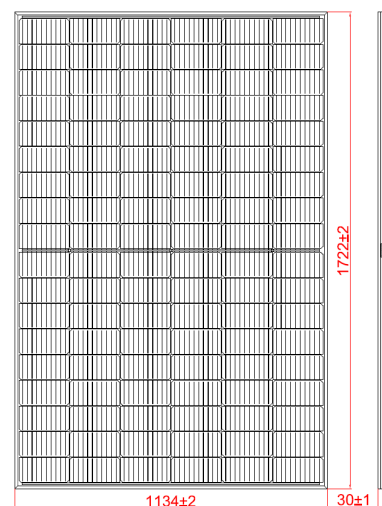
*Measuring tolerance: ±3%

Mechanical Specifications

External Dimension	1722 x 1134 x 30 mm
Weight	21.5 kg
Solar Cells	PERC Mono 182 x 91 mm(108 pcs)
Front Glass	3.2 mm AR coating tempered glass
Frame	Black anodized aluminium alloy
Junction Box	IP68 / 3 diodes
Connector Type	MC4
Cable Type	12 AWG PV Wire(UL)
Cable Length	Portrait: 400 mm(+) / 200 mm(-) Landscape: 1200 mm(+) / 1200 mm(-) or customized length
Mechanical Load(Front)	5400 Pa / 113 psf*
Mechanical Load(Rear)	2400 Pa / 50 psf*

*Refer to SEG installation manual for details

Technical Drawing



*Refer to SEG installation manual for details

Temperature Characteristics

Pmax Temperature Coefficient	-0.35 %/°C
Voc Temperature Coefficient	-0.27 %/°C
Isc Temperature Coefficient	+0.05 %/°C
Operating Temperature	-40~+85 °C
Nominal Operating Cell Temperature (NOCT)	45±2 °C

Packing Configuration

Container	20'GP	40'HQ
Pieces per Pallet	36	36
Pallets per Container	6	24
Pieces per Container	216	864

I-V Curve

