

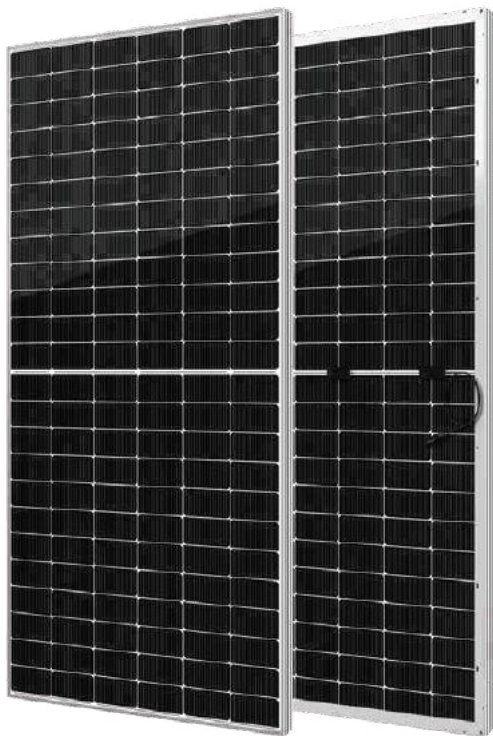


# YUKON N Series

Half-Cell N-Type Bifacial Module

**575-590Wp**  
Module Power Output

**22.84%**  
Max Efficiency



## Key Features



High module conversion efficiency



Better temperature coefficient



Super multi busbar technology



Low attenuation long warranty



Superior load capacity



Higher bifaciality

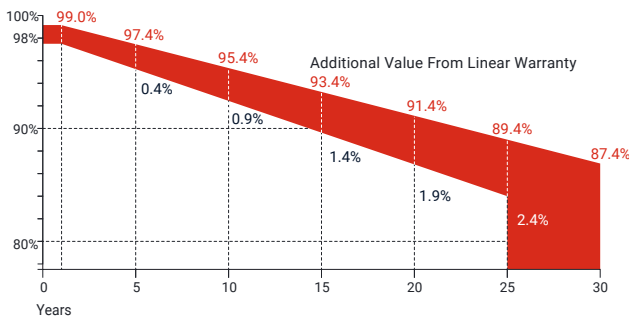


USA based liability insurance



Houston, Texas based company

## Warranty



**15** Years  
Guarantee on product material and workmanship

**30** Years  
Linear power output warranty

## Product Certification

IEC61215:2016; IEC 61730:2016; UL61215; UL61730	
IEC62804	PID
IEC61701	Salt Mist
IEC62716	Ammonia Resistance
IEC60068	Dust and Sand
IEC61215	Hailstone
Fire Type (UL61730): Type 29	
ISO14001:2015; ISO9001:2015; ISO45001:2018	

## About SEG Solar

Founded in 2016, SEG is a leading vertically integrated PV manufacturer headquartered in Houston, Texas, U.S., and is dedicated to delivering reliable and cost-effective solar modules to the utility, commercial and residential markets. By the end of 2023, SEG has shipped over 5 GW of solar modules worldwide. The company is expected to exceed a production capacity of 5.5 GW by the end of 2024.



Download Datasheet

**Electrical Characteristics**

Module Type	SEG-575-BTA-BG			SEG-580-BTA-BG			SEG-585-BTA-BG			SEG-590-BTA-BG		
	Front STC	Front NOCT	Back STC	Front STC	Front NOCT	Back STC	Front STC	Front NOCT	Back STC	Front STC	Front NOCT	Back STC
Maximum Power -Pmp(Wp)*	575	433	460	580	437	464	585	441	468	590	445	472
Open Circuit Voltage -Voc(V)	51.73	50.01	51.71	51.95	50.29	51.93	52.16	50.56	52.14	52.37	50.79	52.35
Short Circuit Current -Isc(A)	13.79	11.04	11.04	13.84	11.08	11.08	13.89	11.12	11.12	13.94	11.17	11.17
Maximum Power Voltage -Vmp(V)	43.82	41.24	43.80	44.02	41.42	44.00	44.22	41.64	44.20	44.43	41.86	44.41
Maximum Power Current -Imp(A)	13.12	10.50	10.50	13.17	10.55	10.55	13.23	10.59	10.59	13.28	10.63	10.63
Module Efficiency(%)	22.26			22.45			22.65			22.84		
Power Tolerance(W)						(0, +4.99)						
Maximum System Voltage						1500V DC						
Maximum Series Fuse Rating						30 A						
Bifaciality						80±10%						

STC: Irradiance 1000 W/m<sup>2</sup> module temperature 25°C AM=1.5

NOCT: Irradiance 800W/m<sup>2</sup> ambient temperature 20°C module temperature 45°C wind speed: 1m/s

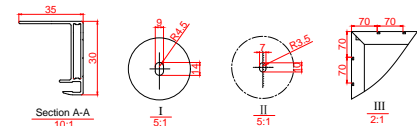
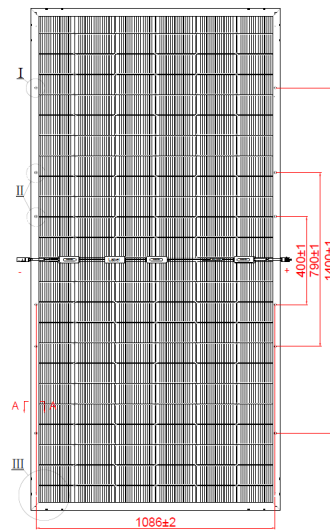
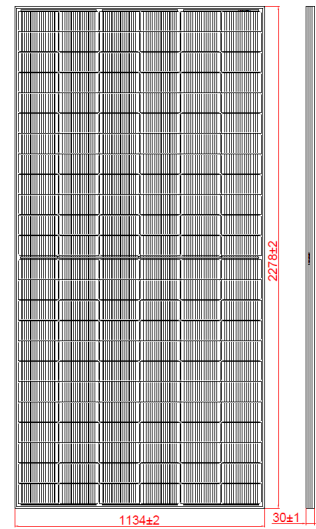
\*Measuring tolerance: ±3%

**Mechanical Specifications**

External Dimension	2278 x 1134 x 30 mm
Weight	32.0 kg
Solar Cells	N-Type 182 x 91 mm(144 pcs)
Front Glass	2.0 mm AR coating semi-tempered glass
Back Glass	2.0 mm Semi-tempered glass
Frame	Anodized aluminium alloy
Junction Box	IP68 / 3 diodes
Connector Type	PV-CO02-xy or MC4
Cable Type	12 AWG PV Wire(UL)
Cable Length	Portrait: 400 mm(+)/ 200 mm(-) Landscape: 1200 mm(+)/ 1200 mm(-) or customized length
Mechanical Load(Front)	5400 Pa / 113 psf*
Mechanical Load(Rear)	2400 Pa / 50 psf*

\*Refer to SEG installation manual for details

**Technical Drawing**



\*Refer to SEG installation manual for details

**Temperature Characteristics**

Pmax Temperature Coefficient	-0.30 %/°C
Voc Temperature Coefficient	-0.25 %/°C
Isc Temperature Coefficient	+0.046 %/°C
Operating Temperature	-40~+85 °C
Nominal Operating Cell Temperature (NOCT)	45±2 °C

**Packing Configuration**

Container	20'GP	40'HQ	40'HQ (For USA)
Pieces per Pallet	36	36	36
Pallets per Container	4	20	16
Pieces per Container	144	720	576

**I-V Curve**

