

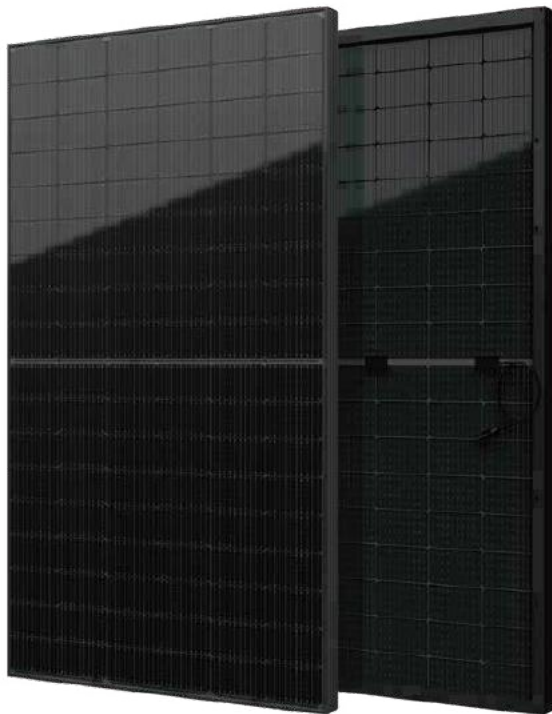


# YUKON Series

Black Diamond Half-Cell Bifacial Module

**400-415Wp**  
Module Power Output

**21.25%**  
Max Efficiency



## Key Features



High module conversion efficiency



Better temperature coefficient



Super multi busbar technology



Low attenuation long warranty



Superior load capacity



Higher bifaciality

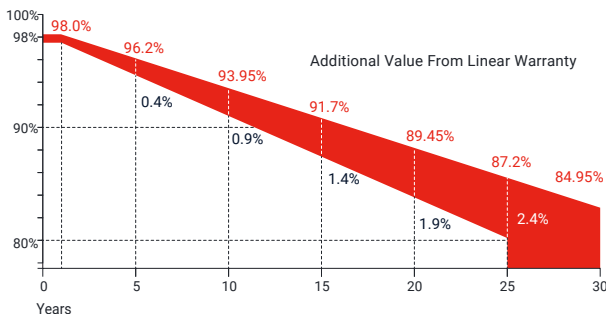


USA based liability insurance



Houston, Texas based company

## Warranty



**30 Years** Guarantee on product material and workmanship

**30 Years** Linear power output warranty

## Product Certification

IEC61215; IEC61730; UL61215; UL61730	
IEC62804	PID
IEC61701	Salt Mist
IEC62716	Ammonia Resistance
IEC60068	Dust and Sand
IEC61215	Hailstone
Fire Type (UL61730): Type 29	
ISO14001:2015; ISO9001:2015; ISO45001:2018	



## About SEG Solar

Founded in 2016, SEG is a leading vertically integrated PV manufacturer headquartered in Houston, Texas, U.S., and is dedicated to delivering reliable and cost-effective solar modules to the utility, commercial and residential markets. By the end of 2023, SEG has shipped over 5 GW of solar modules worldwide. The company is expected to exceed a production capacity of 5.5 GW by the end of 2024.



Download Datasheet

## Electrical Characteristics

Module Type	SEG-400-BMD-BG			SEG-405-BMD-BG			SEG-410-BMD-BG			SEG-415-BMD-BG		
	Front STC	Front NOCT	Back STC	Front STC	Front NOCT	Back STC	Front STC	Front NOCT	Back STC	Front STC	Front NOCT	Back STC
Maximum Power -Pmp(Wp)*	400	301	280	405	304	284	410	308	287	415	311	291
Open Circuit Voltage -Voc(V)	37.12	36.64	37.10	37.22	34.73	37.20	37.32	34.81	37.30	37.42	34.90	37.40
Short Circuit Current -Isc(A)	13.60	10.99	9.59	13.70	11.07	9.66	13.80	11.15	9.73	13.90	11.23	9.80
Maximum Power Voltage -Vmp(V)	30.81	28.82	30.80	30.93	28.91	30.98	31.05	29.05	31.03	31.17	29.19	31.17
Maximum Power Current -Imp(A)	12.99	10.44	9.10	13.10	10.51	9.17	13.21	10.59	9.17	13.32	10.66	9.34
Module Efficiency(%)	20.48			20.74			21.00			21.25		
Power Tolerance(W)							(0, +4.99)					
Maximum System Voltage							1500V DC					
Maximum Series Fuse Rating							30 A					
Bifaciality							70±10%					

STC: Irradiance 1000 W/m<sup>2</sup> module temperature 25°C AM=1.5

NOCT: Irradiance 800W/m<sup>2</sup> ambient temperature 20°C module temperature 45°C wind speed: 1m/s

\*Measuring tolerance: ±3%

## Mechanical Specifications

External Dimension	1722 x 1134 x 30 mm
Weight	24 kg
Solar Cells	PERC Mono 108 pcs(54 x 2)
Front Glass	2.0 mm AR coating semi-tempered glass
Back Glass	2.0 mm Semi-tempered glass
Frame	Black anodized aluminium alloy
Junction Box	IP68 / 3 diodes
Connector Type	MC4
Cable Type	12 AWG PV Wire(UL)
Cable Length	Portrait: 400 mm(+) / 200 mm(-) Landscape: 1200 mm(+) / 1200 mm(-) or customized length
Mechanical Load(Front)	5400 Pa / 113 psf*
Mechanical Load(Rear)	2400 Pa / 50 psf*

\*Refer to SEG installation manual for details

## Temperature Characteristics

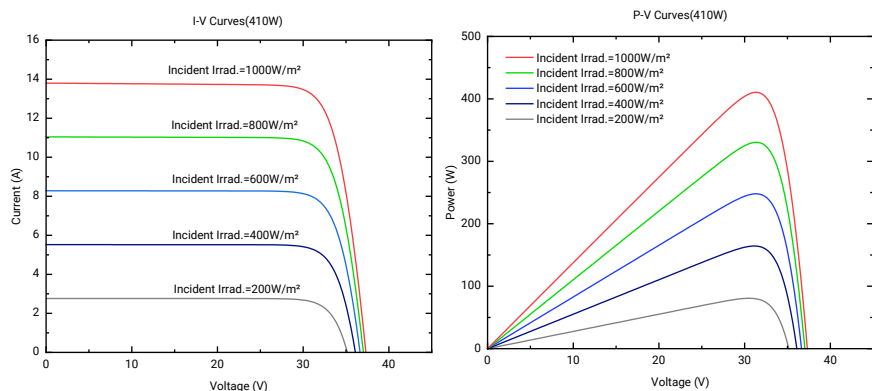
Pmax Temperature Coefficient	-0.35 %/°C
Voc Temperature Coefficient	-0.27 %/°C
Isc Temperature Coefficient	+0.05 %/°C
Operating Temperature	-40~+85 °C
Nominal Operating Cell Temperature (NOCT)	45±2 °C

## Packing Configuration

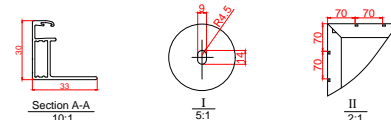
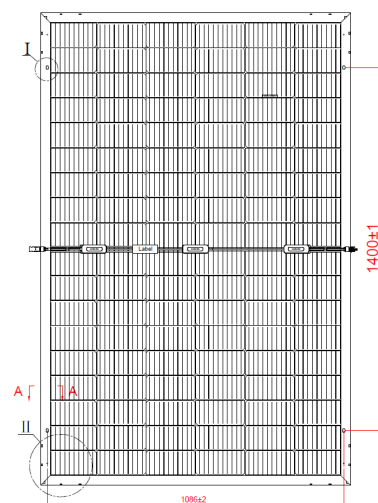
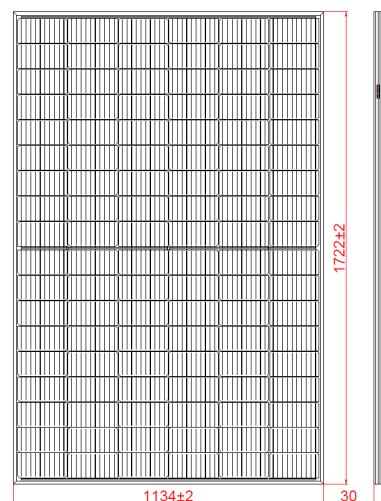
Container*	20'GP	40'HQ	40'HQ (For USA)
Pieces per Pallet	36	36	36
Pallets per Container	6	24	22
Pieces per Container	216	864	792

\*Refer to the SEG container technical documentation for 53' box trailer or other trucks loading quantity

## Curves of PV Module



## Technical Drawing



\*Refer to SEG installation manual for details