

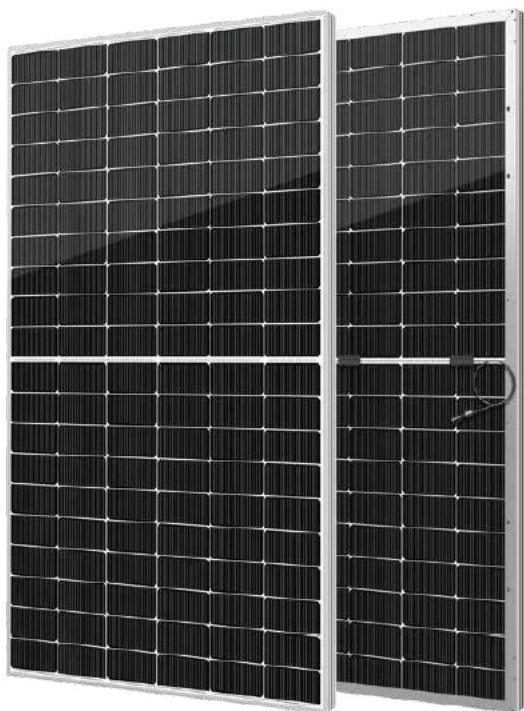


YUKON N Series

Half-Cell N-Type Bifacial Module

475-495Wp
Module Power Output

22.87%
Max Efficiency



Key Features



High module conversion efficiency



Better temperature coefficient



Super multi busbar technology



Low attenuation long warranty



Superior load capacity



Higher bifaciality

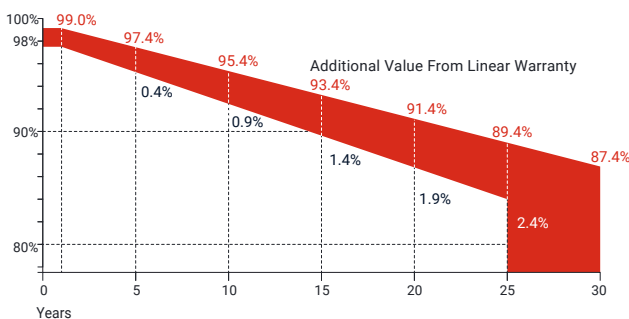


USA based liability insurance



Houston, Texas based company

Warranty



15 Years Guarantee on product material and workmanship

30 Years Linear power output warranty

Product Certification

IEC61215; IEC61730; UL61215; UL61730

IEC62804

PID

IEC61701

Salt Mist

IEC62716

Ammonia Resistance

IEC60068

Dust and Sand

IEC61215

Hailstone

Fire Type (UL61730): Type 29

ISO14001:2015; ISO9001:2015; ISO45001:2018



About SEG Solar

Founded in 2016, SEG is a leading vertically integrated PV manufacturer headquartered in Houston, Texas, U.S., and is dedicated to delivering reliable and cost-effective solar modules to the utility, commercial, and residential markets. By the end of 2024, SEG had shipped over 6 GW of solar modules worldwide and have achieved a module production capacity of 6 GW.



Download Datasheet

Electrical Characteristics

| Module Type | SEG-475-BTB-BG | | | SEG-480-BTB-BG | | | SEG-485-BTB-BG | | | SEG-490-BTB-BG | | | SEG-495-BTB-BG | | | | | |
|-------------------------------|----------------|-------|-------|----------------|-------|-------|----------------|-------|-------|----------------|-------|-------|----------------|-------|-------|--|--|--|
| | STC | NOCT | BNPI | STC | NOCT | BNPI | STC | NOCT | BNPI | STC | NOCT | BNPI | STC | NOCT | BNPI | | | |
| Maximum Power -Pmp(Wp)* | 475 | 357 | 526 | 480 | 361 | 532 | 485 | 365 | 537 | 490 | 369 | 543 | 495 | 373 | 548 | | | |
| Open Circuit Voltage -Voc(V) | 43.11 | 40.85 | 43.11 | 43.29 | 41.04 | 43.29 | 43.47 | 41.24 | 43.47 | 43.64 | 41.47 | 43.64 | 43.82 | 41.70 | 43.82 | | | |
| Short Circuit Current -Isc(A) | 13.80 | 11.15 | 15.29 | 13.86 | 11.20 | 15.36 | 13.91 | 11.27 | 15.41 | 13.95 | 11.33 | 15.46 | 14.00 | 11.39 | 15.51 | | | |
| Maximum Power Voltage -Vmp(V) | 36.54 | 33.63 | 36.54 | 36.68 | 33.83 | 36.68 | 36.85 | 34.05 | 36.85 | 37.03 | 34.23 | 37.03 | 37.20 | 34.44 | 37.20 | | | |
| Maximum Power Current -Imp(A) | 13.00 | 10.62 | 14.40 | 13.08 | 10.67 | 14.49 | 13.16 | 10.72 | 14.58 | 13.23 | 10.78 | 14.66 | 13.31 | 10.83 | 14.75 | | | |
| Module Efficiency(%) | 21.94 | | | 22.17 | | | 22.40 | | | 22.63 | | | 22.87 | | | | | |
| Power Tolerance(W) | | | | | | | (0, +4.99) | | | | | | | | | | | |
| Maximum System Voltage | | | | | | | 1500V DC | | | | | | | | | | | |
| Maximum Series Fuse Rating | | | | | | | 30 A | | | | | | | | | | | |
| Bifaciality | | | | | | | 80±10% | | | | | | | | | | | |

STC: Irradiance 1000 W/m² module temperature 25°C AM=1.5

NOCT: Irradiance 800W/m² ambient temperature 20°C module temperature 45°C wind speed: 1m/s

*Measuring tolerance: ±3%

BNPI: Front irradiance 1000W/m², Rear irradiance 135W/m²

Mechanical Specifications

| | |
|------------------------|---|
| External Dimension | 1909 x 1134 x 30 mm |
| Weight | 27.3 kg |
| Solar Cells | N-Type Mono-crystalline 120 pcs(60 x 2) |
| Front Glass | 2.0 mm AR coating heat strengthened glass |
| Back Glass | 2.0 mm heat strengthened glass |
| Frame | Anodized aluminium alloy |
| Junction Box | IP68 / 3 diodes |
| Connector Type | MC4 or others |
| Cable Type | 12 AWG PV Wire(UL) |
| Cable Length | 400 mm(+), 200 mm(-) or customized length |
| Mechanical Load(Front) | 5400 Pa / 113 psf* |
| Mechanical Load(Rear) | 2400 Pa / 50 psf* |

*Refer to SEG installation manual for details

Temperature Characteristics

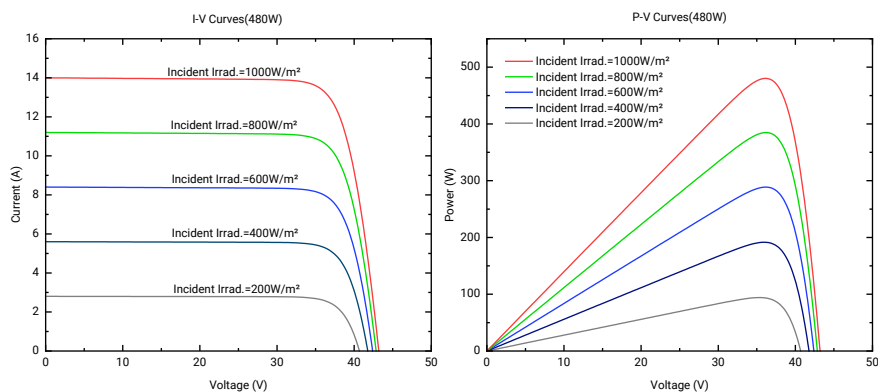
| | |
|---|-------------|
| Pmax Temperature Coefficient | -0.30 %/°C |
| Voc Temperature Coefficient | -0.25 %/°C |
| Isc Temperature Coefficient | +0.046 %/°C |
| Operating Temperature | -40~+85 °C |
| Nominal Operating Cell Temperature (NOCT) | 45±2 °C |

Packing Configuration

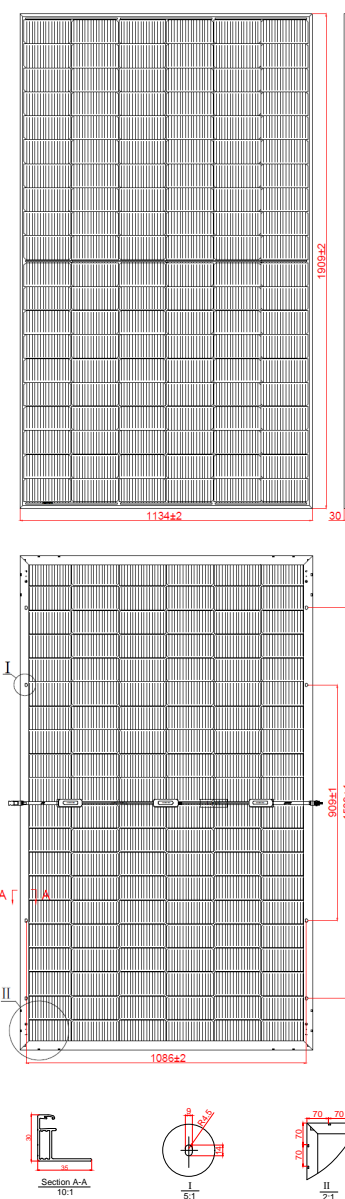
| Container | 20'GP | 40'HQ | 40'HQ (For USA) | 53' Trailer* |
|-----------------------|-------|-------|--------------------|--------------|
| Pieces per Pallet | 36 | 36 | 36 | 36 |
| Pallets per Container | 5 | 24 | 20 | 20 |
| Pieces per Container | 180 | 864 | 720 | 720 |

*Refer to the SEG container technical documentation for 53' box trailer or other trucks loading quantity

Curves of PV Module



Technical Drawing



*Refer to SEG installation manual for details