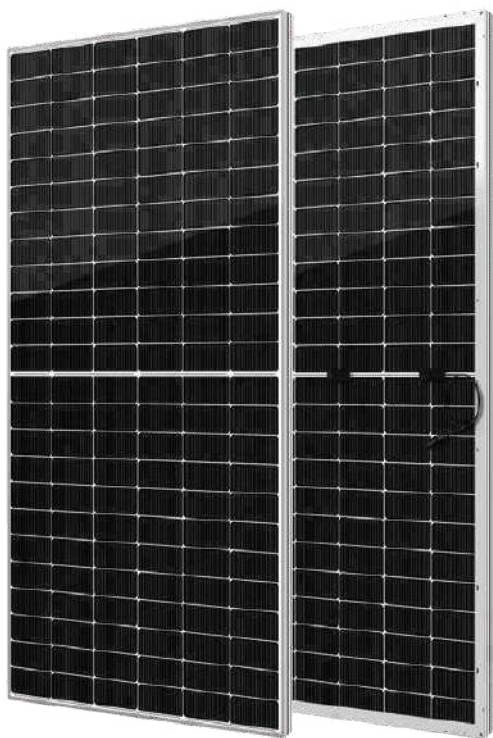




YUKON N Series

Half-Cell N-Type Bifacial Module

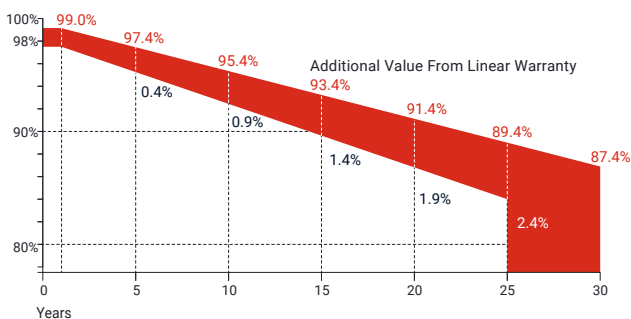
580-600Wp | **23.23%**
Module Power Output | Max Efficiency



Key Features

-  High module conversion efficiency
-  Better temperature coefficient
-  Super multi busbar technology
-  Low attenuation long warranty
-  Superior load capacity
-  Higher bifaciality
-  USA based liability insurance
-  Houston, Texas based company



Warranty



15 Years Guarantee on product material and workmanship

30 Years Linear power output warranty

Product Certification

IEC61215; IEC61730; UL61215; UL61730	
IEC62804	PID
IEC61701	Salt Mist
IEC62716	Ammonia Resistance
IEC60068	Dust and Sand
IEC61215	Hailstone
Fire Type (UL61730): Type 29	
ISO14001:2015; ISO9001:2015; ISO45001:2018	
	
	
	
	

About SEG Solar

Founded in 2016, SEG is a leading vertically integrated PV manufacturer headquartered in Houston, Texas, U.S., and is dedicated to delivering reliable and cost-effective solar modules to the utility, commercial, and residential markets. By the end of 2024, SEG had shipped over 6 GW of solar modules worldwide and have achieved a module production capacity of 6 GW.



Download Datasheet

Electrical Characteristics

Module Type	SEG-580-BTA-BG			SEG-585-BTA-BG			SEG-590-BTA-BG			SEG-595-BTA-BG			SEG-600-BTA-BG		
	STC	NOCT	BNPI	STC	NOCT	BNPI	STC	NOCT	BNPI	STC	NOCT	BNPI	STC	NOCT	BNPI
Maximum Power -Pmp(Wp)*	580	437	643	585	441	648	590	445	654	595	449	659	600	453	665
Open Circuit Voltage -Voc(V)	51.95	50.29	51.95	52.16	50.56	52.16	52.37	50.79	52.37	52.58	51.02	52.58	52.80	51.25	52.79
Short Circuit Current -Isc(A)	13.84	11.08	15.33	13.89	11.12	15.39	13.94	11.17	15.45	13.99	11.22	15.50	14.04	11.27	15.57
Maximum Power Voltage -Vmp(V)	44.02	41.42	44.02	44.22	41.64	44.22	44.43	41.86	44.43	44.64	42.08	44.64	44.85	42.30	44.82
Maximum Power Current -Imp(A)	13.17	10.55	14.59	13.23	10.59	14.66	13.28	10.63	14.71	13.33	10.67	14.77	13.38	10.71	14.84
Module Efficiency(%)	22.45			22.65			22.84			23.03			23.23		
Power Tolerance(W)							(0, +4.99)								
Maximum System Voltage							1500V DC								
Maximum Series Fuse Rating							30 A								
Bifaciality							80±10%								

STC: Irradiance 1000 W/m² module temperature 25°C AM=1.5

NOCT: Irradiance 800W/m² ambient temperature 20°C module temperature 45°C wind speed: 1m/s

*Measuring tolerance: ±3%

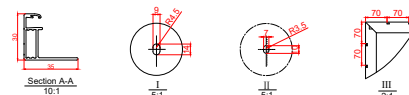
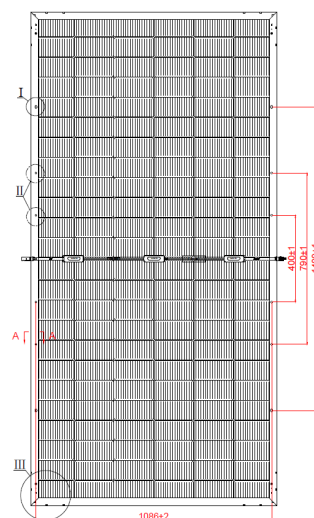
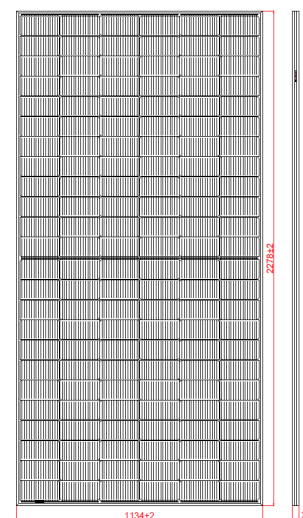
BNPI: Front irradiance 1000W/m², Rear irradiance 135W/m²

Mechanical Specifications

External Dimension	2278 x 1134 x 30 mm
Weight	32.0 kg
Solar Cells	N-Type Mono-crystalline 144 pcs(72 x 2)
Front Glass	2.0 mm AR coating heat strengthened glass
Back Glass	2.0 mm heat strengthened glass
Frame	Anodized aluminium alloy
Junction Box	IP68 / 3 diodes
Connector Type	MC4 or others
Cable Type	12 AWG PV Wire(UL)
Cable Length	400 mm(+), 200 mm(-) or customized length
Mechanical Load(Front)	5400 Pa / 113 psf*
Mechanical Load(Rear)	2400 Pa / 50 psf*

*Refer to SEG installation manual for details

Technical Drawing



Temperature Characteristics

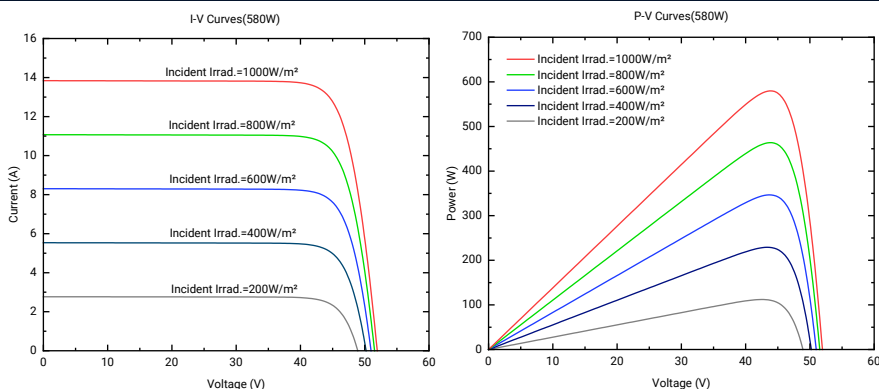
Pmax Temperature Coefficient	-0.30 %/°C
Voc Temperature Coefficient	-0.25 %/°C
Isc Temperature Coefficient	+0.046 %/°C
Operating Temperature	-40~+85 °C
Nominal Operating Cell Temperature (NOCT)	45±2 °C

Packing Configuration

Container	20'GP	40'HQ	40'HQ (For USA)	53' Trailer*
Pieces per Pallet	36	36	36	36
Pallets per Container	4	20	16	16
Pieces per Container	144	720	576	576

*Refer to the SEG container technical documentation for 53' box trailer or other trucks loading quantity

Curves of PV Module



*Refer to SEG installation manual for details